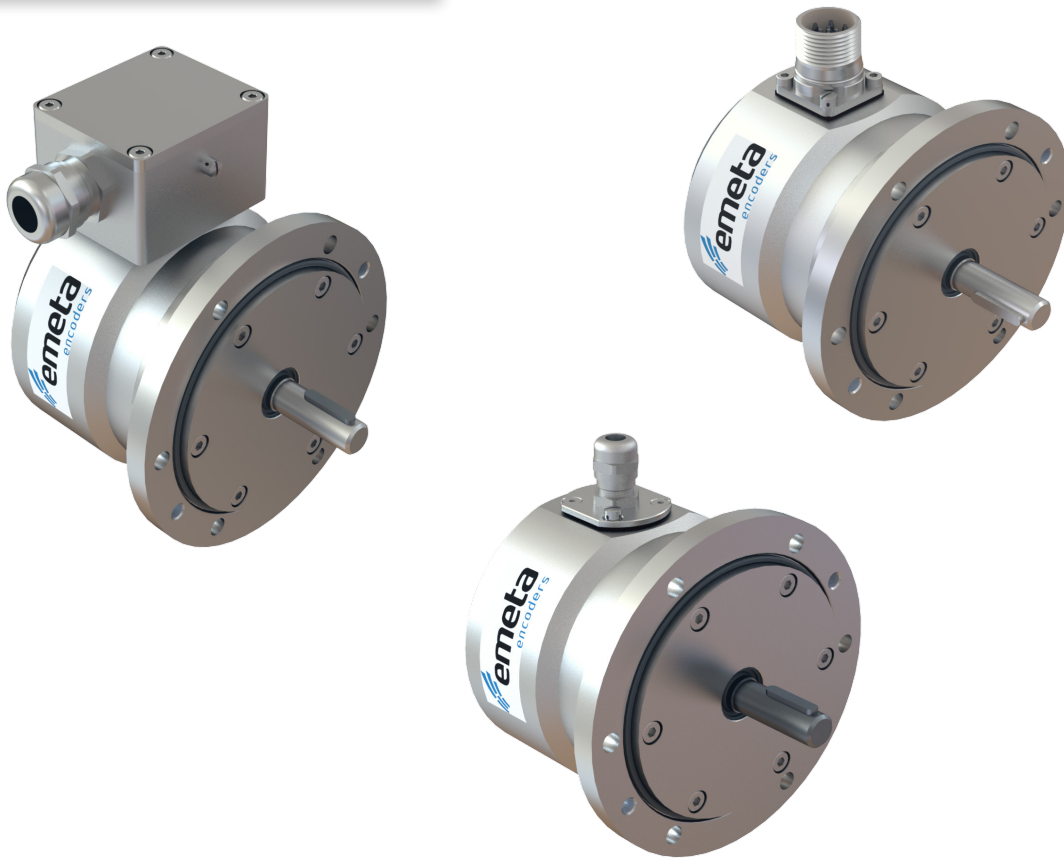


MA4101-SERIES



Heavy Duty Incremental Encoder

The latest encoder from Emeta is designed for harsh and demanding environments. This robust encoder is available with an aluminium or Stainless Steel AISI 316 housing. The encoder comes with a 115mm B10 EURO-Flange and $\varnothing 11$ mm stainless steel 14057 solid shaft with key-way to prevent slip. With features such as:

- * Double shaft seal with protective lip
- * Breathable membrane filter
- * Mechanical locking
- * Enlarged sturdy bearings

This encoder will withstand even the harshest environments.

The MA4101-Series can be supplied with 3 types of connections suitable for your application type.

A- Radial 12-pin M23 MAle Connector, CCW

B- Radial cable with required lenght

C- Terminal box with cable gland for $\varnothing 6$ - $\varnothing 12$ mm

For more info regarding Emetas Heavy Duty encoders please contact us or our partner in the Netherlands: tsb - bescom bv. More info at www.tsb-bescom.nl



www.emetaencoders.com



www.tsb-bescom.nl