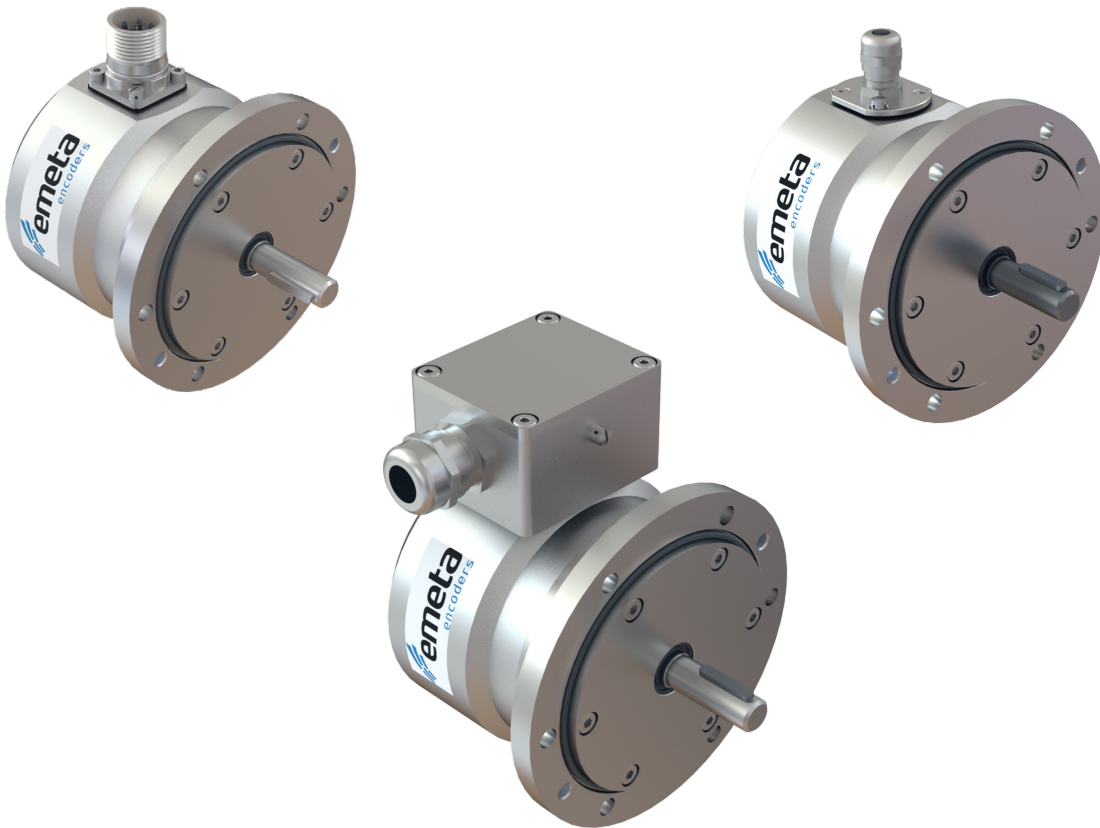


# MA4101-SERIES



## Heavy Duty Incremental Encoder

The latest encoder from Emeta is designed for harsh and demanding environments. This robust encoder is available with an aluminium or Stainless Steel AISI 316 housing. Comes with a 115mm B10 EURO-Flange and  $\varnothing 11$ mm stainless steel 14057 solid shaft with key-way to prevent slip. With features such as:

**\* Double shaft seal with protective lip**

- Ensuring protection against moisture, fluids and dust from entering via the shaft.

**\* Breathable membrane filter**

- Double on terminal box and single in housing on cable and M23 Male connector versions

**\* Mechanical locking**

- Mechanical secured shaft and bearings arrangement

**\* Enlarged sturdy bearings**

- Permanently greased with bearing load at 1000rpm:  
radial <350 N, axial <250N

**\* Flange O-ring**

- Viton based for high durability and protection

For more info regarding Emetas Heavy Duty encoders please contact us or our partner in the Netherlands: tsb - bescom bv. More info at [www.tsb-bescom.nl](http://www.tsb-bescom.nl)



[www.emetaencoders.com](http://www.emetaencoders.com)



[www.tsb-bescom.nl](http://www.tsb-bescom.nl)