

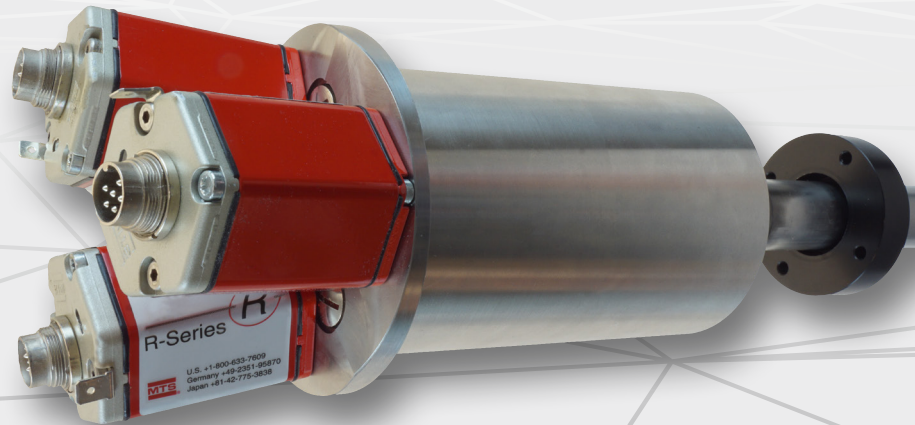
Temposonics®

Magnetostriktive Linear Position Sensors



R-Series RF – Holder and support tube Product Brief

- ▶ Accommodation of up to 3 RF sensors
- ▶ Efficient design
- ▶ Separate guidance of the RF sensors

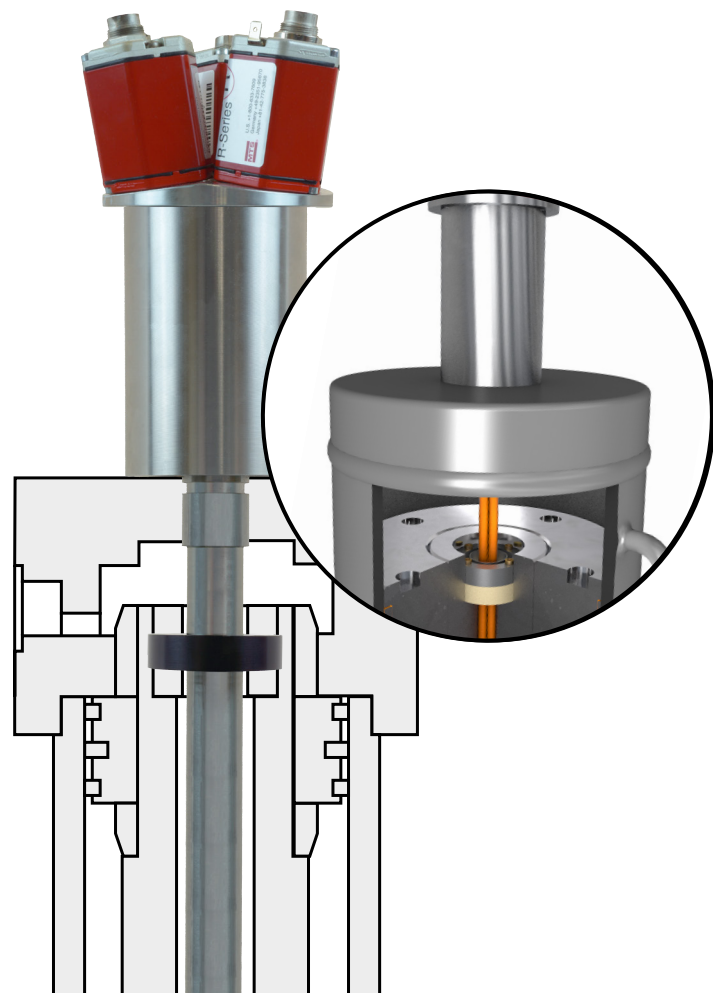


Perfect fit for RF sensors

The holder and the support tube are especially designed to accommodate and guide RF sensors. Therefore up to three RF sensors can be operated in a small space without mutual interference. The separate guide allows an easy installation and in case of replacement an uncomplicated exchange of the sensors independently.

Make no compromises!

The combination of three independent RF sensors in one holder and support tube helps you to minimize unforeseen downtime of your plant. It also increases the availability of your application and ensures continuous operation. This is especially important for applications with increased safety requirements.



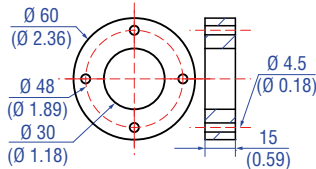
Typical application: Hydraulic steel construction

Technical Specifications

- Holder and support tube separately available
- Support tube suitable for installation in hydraulic cylinder
- Fixing the support tube to the cylinder with six screws
- Material:
Holder: Stainless steel 1.4301
Flange: Stainless steel 1.4301
Support tube: Stainless steel 1.4306; 1.4307

Matching magnet

Drawing



Name & part no. / Description

Ring magnet OD60 Part no. MT0162

Material: AlCuMgPb,
magnets compound-filled
Weight: Approx. 90 g
Surface pressure: Max. 20 N/mm²
Fastening torque for M4 screws: 1 Nm
Operating temperature:
-40...+75 °C (-40...+167 °F)

UNITED STATES 3001 Sheldon Drive
MTS Systems Corporation Cary, N.C. 27513
Sensors Division Phone: +1 919 677-0100
Americas & APAC Region E-mail: info.us@mtssensors.com

GERMANY Auf dem Schüffel 9
MTS Sensor Technologie 58513 Lüdenscheid
GmbH & Co. KG Phone: +49 2351 9587-0
EMEA Region & India E-mail: info.de@mtssensors.com

ITALY Phone: +39 030 988 3819
Branch Office E-mail: info.it@mtssensors.com

FRANCE Phone: +33 1 58 4390-28
Branch Office E-mail: info.fr@mtssensors.com

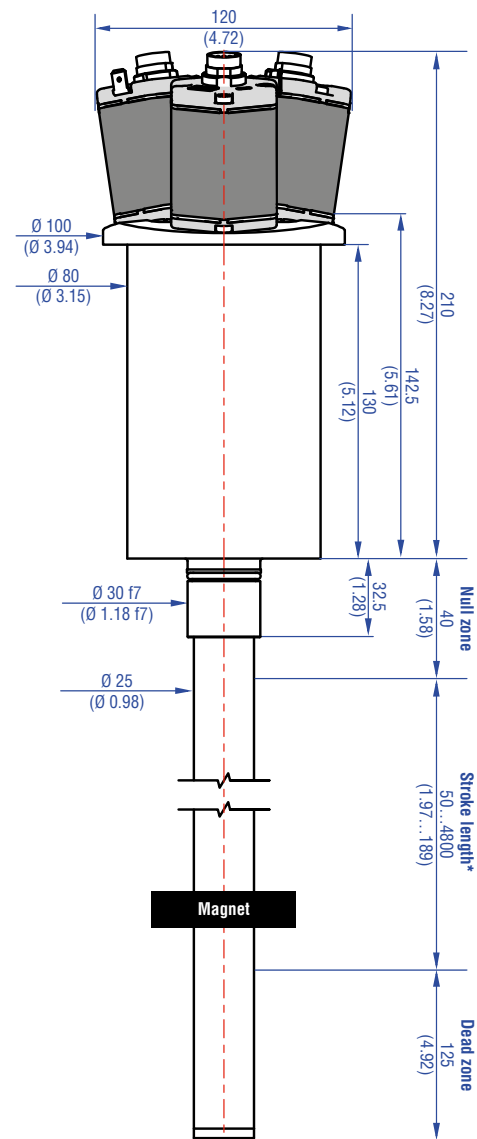
UK Phone: +44 79 44 15 03 00
Branch Office E-mail: info.uk@mtssensors.com

SCANDINAVIA Phone: +46 70 29 91 281
Branch Office E-mail: info.sca@mtssensors.com

CHINA Phone: +86 21 2415 1000 / 2415 1001
Branch Office E-mail: info.cn@mtssensors.com

JAPAN Phone: +81 3 6416 1063
Branch Office E-mail: info.jp@mtssensors.com

www.mtssensors.com



Document part number:
552013 Revision A (EN) 10/2020

ISO 9001
CERTIFIED

